



### Preventive Maintenance Checklist

Date of Inspection: 3/5/2026  
Service Call: 25-66845

Madison County Board of Supervisors \_ MS Site: Madison  
County EMA  
1633 W Peace St  
Canton, MS, 39046-9041

Type of Inspection: Major PM

Equipment	Manufacturer	Model Number	Serial Number	Spec Number
Engine	TAYLOR	TMC140	23999	
	PERKINS DIESEL	PJ38420	U029805U	
		Unit KW: 140	Unit start hrs: 291.1	End hours 291.3

<u>FUEL SYSTEM CHECKS:</u>		<u>COOLANT SYS CHECKS: CONT.</u>		<u>ENGINE ELECTRICAL SYSTEMS:</u>	
Change fuel filter elements	Yes	Operating temperature (F)	165	Batt. charger output (VDC)	13.6
Check for water in main tank	N/A	Non-contact cool temp	N/A	Batt. Percent of CCA	
Check for water in day tank	N/A	<u>EXHAUST SYSTEM CHECKS:</u>		Spark plugs	N/A
Take fuel sample	N/A	Overall exhaust condition	Good	Distributor cap/rotor	N/A
Drain fuel/water separator	N/A	Cond of turbocharger	N/A	<u>GENERATOR CHECKS:</u>	
Check level in main tank	65%	Exhaust leaks	Good	Vacuum debris	Good
Operation of day tank	N/A	Cond. of exh. rain shield	Good	Alternator bearing cond.	Good
Gaseous fuel pressure	N/A	Check for wet stacking	Good	Circuit breaker operation	Good
<u>LUBRICATING SYSTEM CHECKS:</u>		<u>CONTROL SYSTEM CHECKS:</u>		Cond of AC and DC	Good
Change engine oil	Yes	Gauges and Meters	Good	Alternator non-cont temp	Good
Change engine oil filter	Yes	Control cabinet clean	Good	<u>TRANSFER SWITCH CHECKS:</u>	
Change governor oil	N/A	Operation of all controls	Good	ATS free of debris	N/A
Engine oil pressure (PSI)	70	Shutdown systems check	Good	ATS indicator lamps	N/A
Engine oil level	Full	Indicator/panel lamps	Good	Perform transfer test	N/A
Oil Analysis	N/A	Frequency (Hz)	60.00	Visually inspect linkages	N/A
<u>COOLING SYSTEM CHECKS:</u>		AC voltage L-L	208.00	ATS non-contact temp	N/A
Check louvers	Good	<u>AIR INTAKE CHECKS:</u>		<u>GENERAL CHECKS:</u>	
Adequate fresh air to equip.	Good	Air inlet restriction	Good	Excessive vibration	Good
Radiator Core	Good	Check breather tube	Good	Fuel leaks	Good
Radiator Cap	Good	Air system piping	Good	Oil leaks	Good
Coolant Level	Good	Air cleaner condition	Good	Coolant leaks	Good
Coolant freeze point (F)	-34	<u>ENGINE ELECTRICAL SYSTEMS:</u>		Annunciator operation	N/A
Change coolant filter	N/A	Condition of batteries		Run unit to operating temp.	Yes
Coolant nitrite level (PPM)	N/A	Battery Date	10/1/2025	Controller in auto. mode	N/A
Condition of belts	Good	Clean batteries & cables	Good	All breakers reset & closed	N/A
Condition of hoses	Good	Batt. Conductance Result	Good	Additional work needed	
Check block heater	Good	Battery electrolyte level	N/A	General condition of unit	Good

Performed major PM on generator. Wiped unit down, changed engine oil, changed oil filter(s), changed fuel filter(s), verified all fluids okay. Ran unit up to operating temperature. Unit performed as expected.

Oil Removed: 6 gallons

Lee Coleman

*MLC*

Technician

Customer

Birmingham, AL 205-739-2255    Fayetteville, AR 479-445-6669    Little Rock, AR 501-568-3000    Atlanta, GA 770-448-6687    Louisville, KY 502-267-0474    New Orleans, LA 833-777-6937    Shreveport, LA 318-222-9431    Jackson, MS 833-777-6937    St. Louis, MO 615-244-0650  
 Oklahoma City, OK 833-777-6937    Tulsa, OK 918-960-6000    Charlotte, NC 704-588-1043    Raleigh, NC 919-279-9191    Blountville, TN 423-279-0357    Chattanooga, TN 615-244-0650    Nashville, TN 615-244-0650    Memphis, TN 901-386-4933



### Battery Conductance Testing

Date of Inspection: 3/5/2026  
Service Call: 25-66845

Madison County Board of Supervisors \_ MS Site: Madison  
County EMA

#### Battery Conductance Tests

Battery Number	Rated CCA	Actual CCA	Percentage of CCA	Overall State
1	950	1,252	132	Good
2	N/A	N/A	N/A	N/A
3	N/A	N/A	N/A	N/A
4	N/A	N/A	N/A	N/A
Overall Average Rated CCA:				950
Overall Actual CCA:				1,252
Overall Result:				Good

3/26/2026

001 265 5421



### Site Images

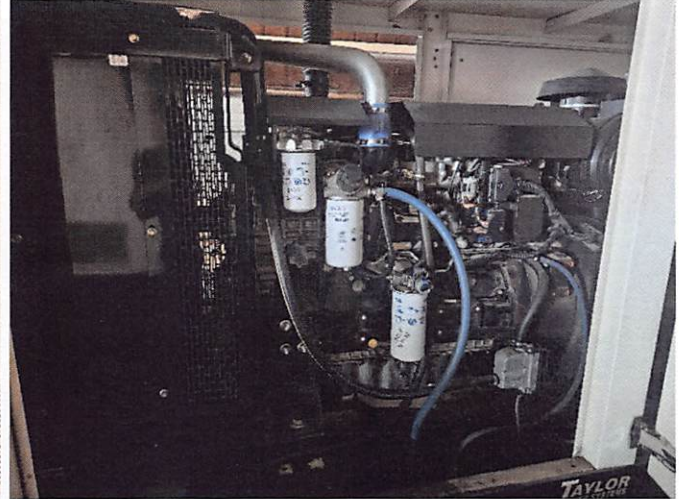
Date of Inspection: 3/5/2026  
Service Call: 25-66845

Madison County Board of Supervisors \_ MS Site: Madison County EMA

Unit Before Inspection



Unit Post Inspection



Unit Data Tag



Unit Status Upon Departure



Other Images If Applicable

